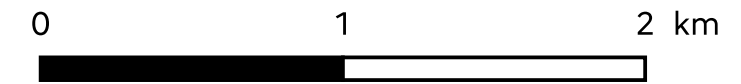
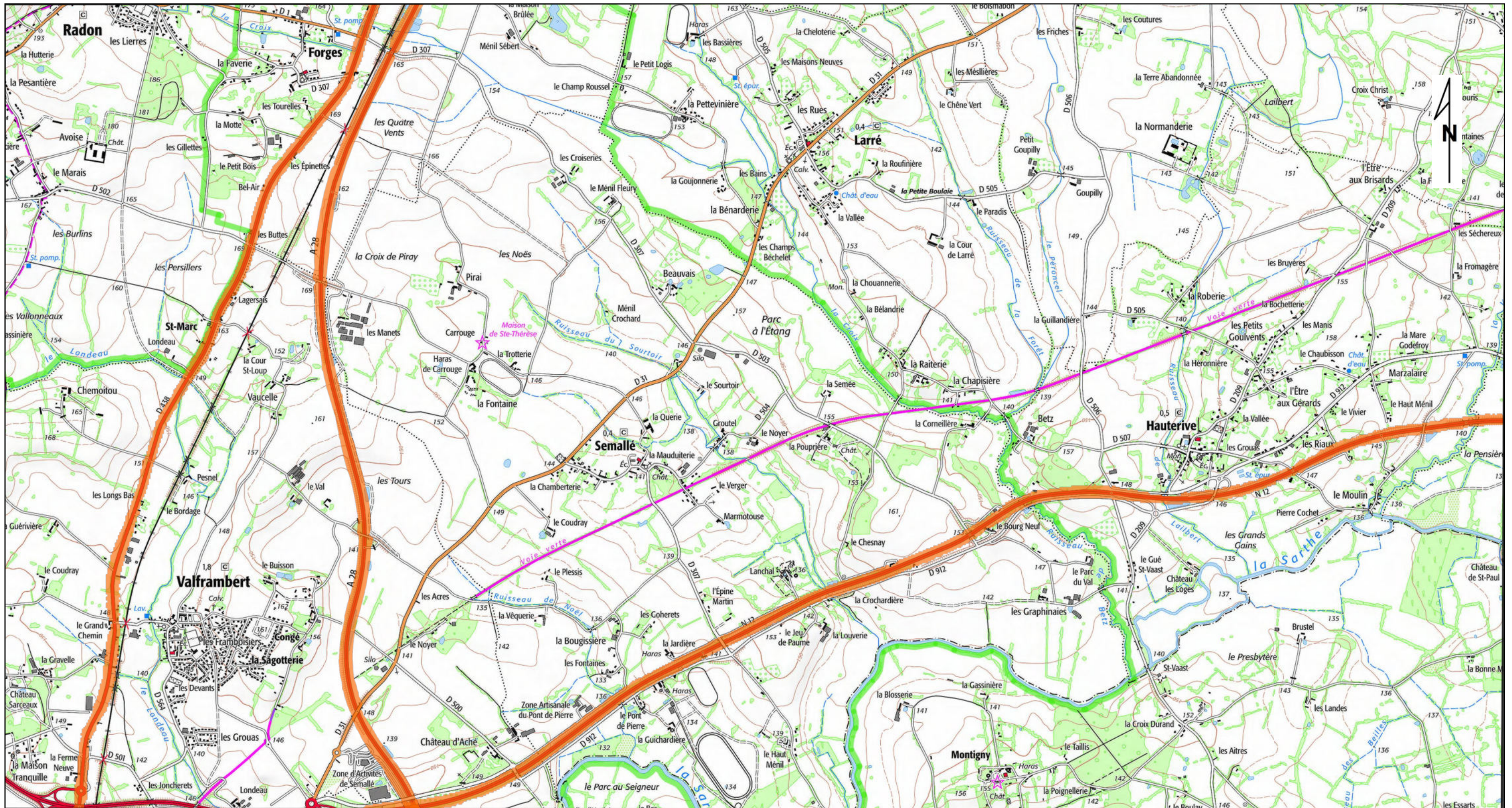


— Valeurs limites dépassées

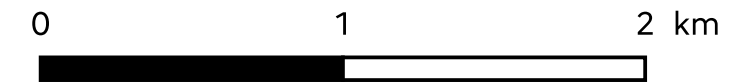


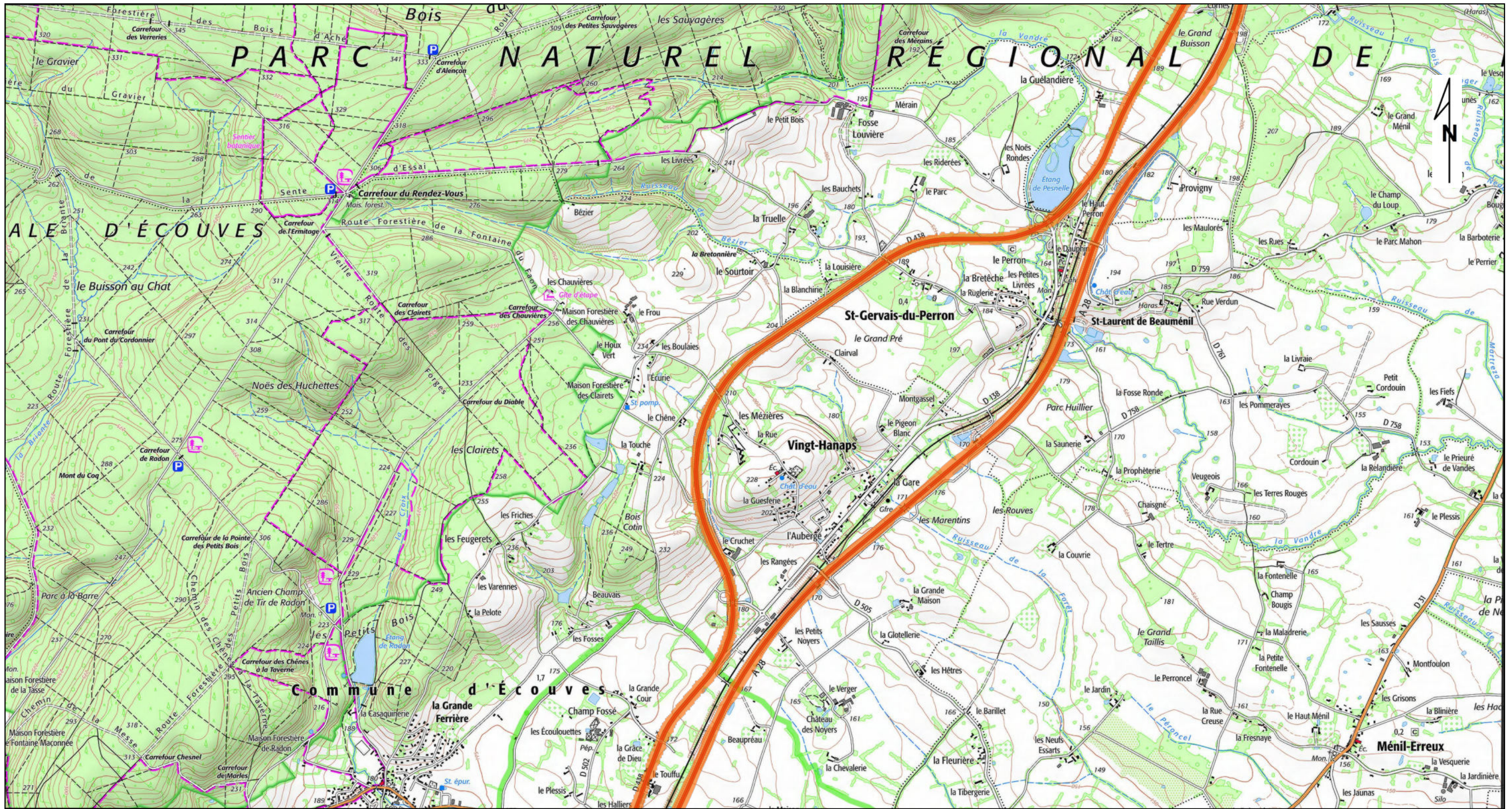
CONNAISSANCE, PROSPECTIVE ET PLANIFICATION (CPP)

K:\1_CARTO\12_NUISANCE\bruit\commande_02_23\atlas_bruit_2023.qg3

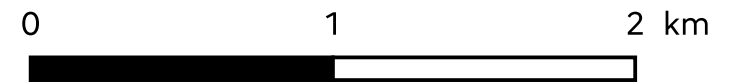


Orange line: Valeurs limites dépassées



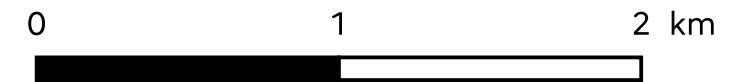


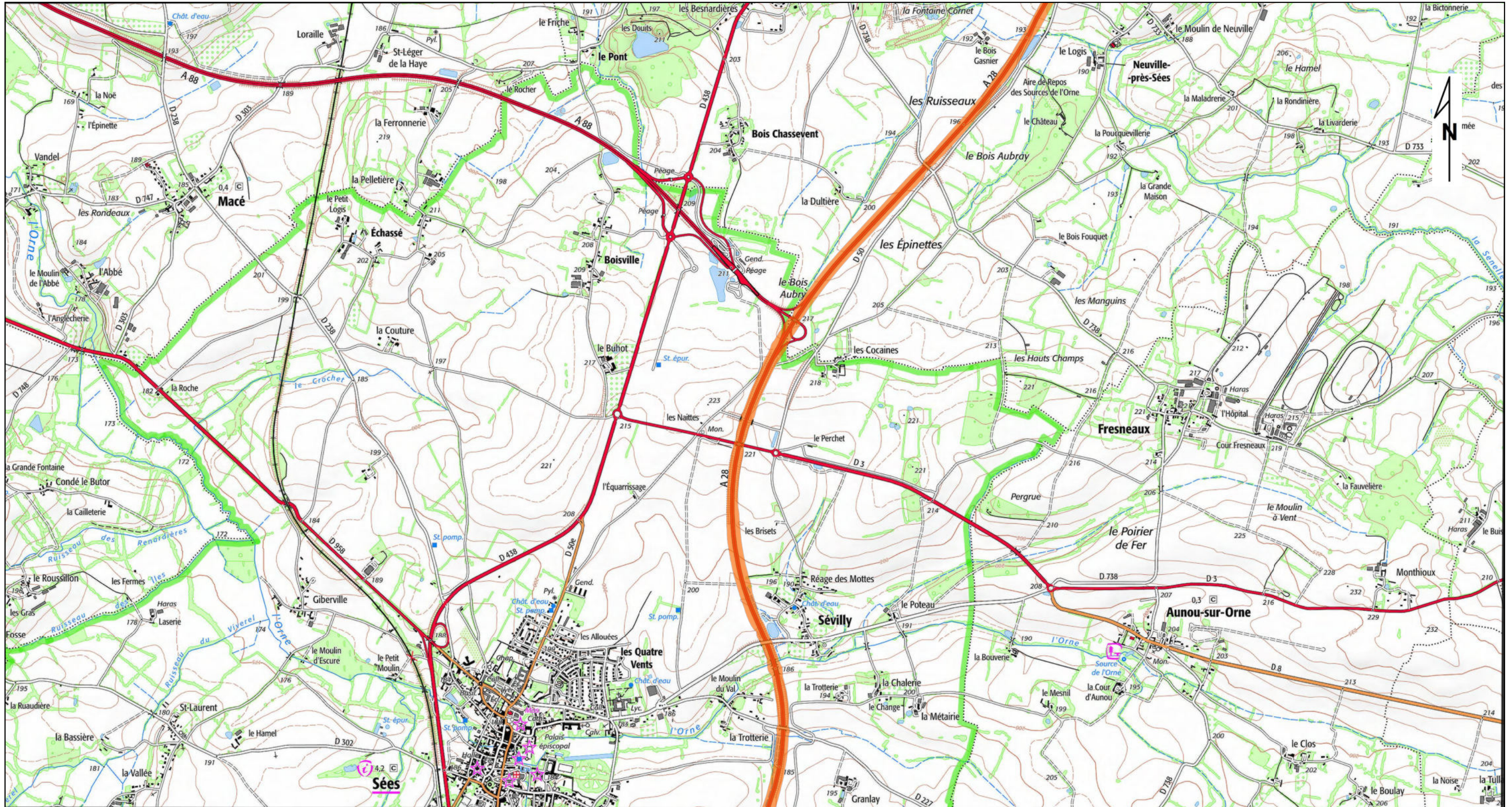
— Valeurs limites dépassées



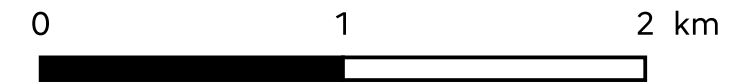


Orange line: Valeurs limites dépassées



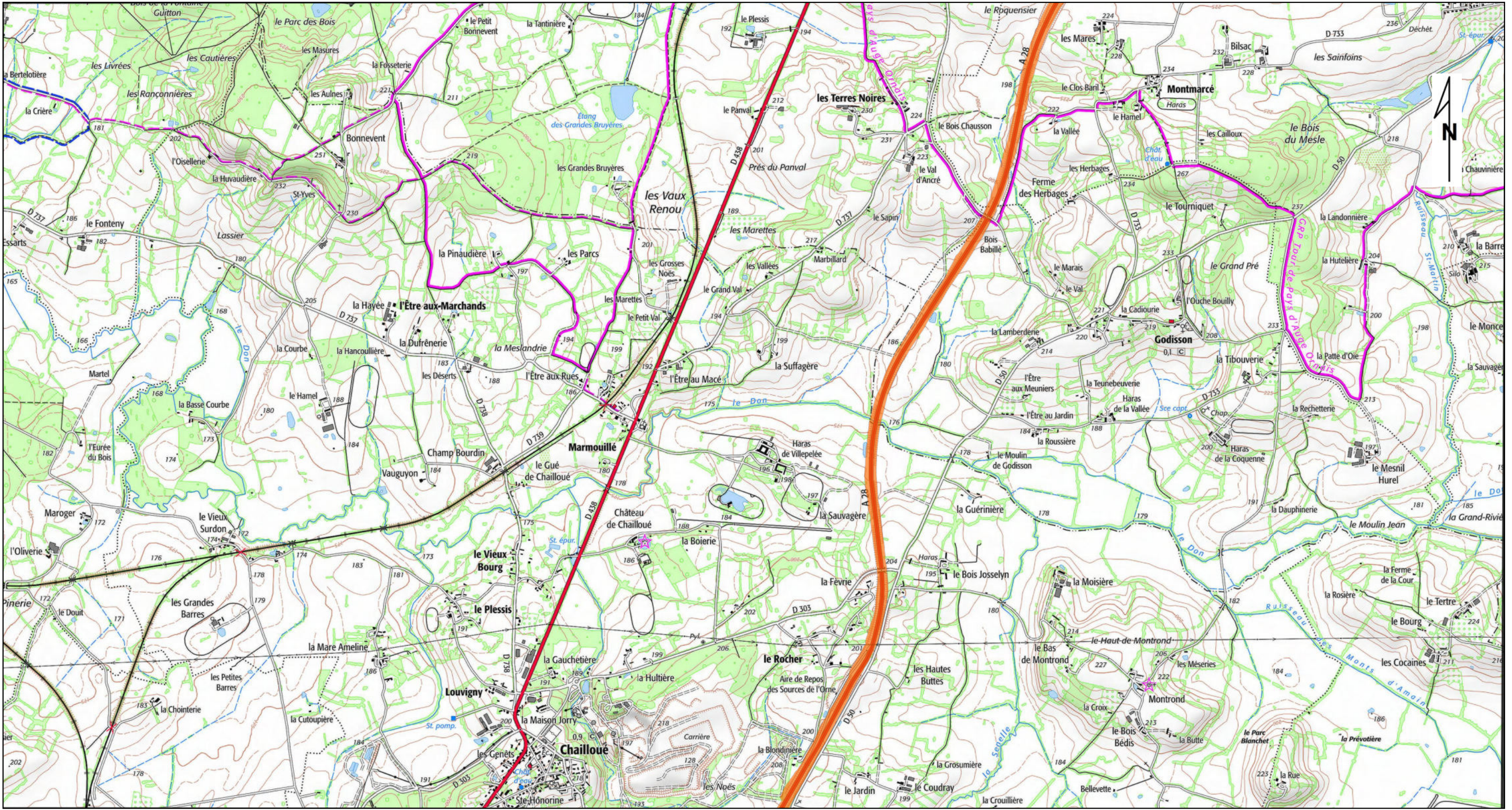


— Valeurs limites dépassées

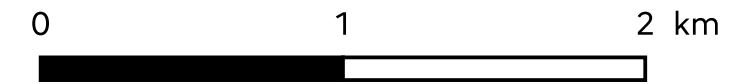


CONNAISSANCE, PROSPECTIVE ET PLANIFICATION (CPP)

K:\1_CARTO\12_NUISANCE\bruit\commande_02_23\atlas_bruit_2023.qgz

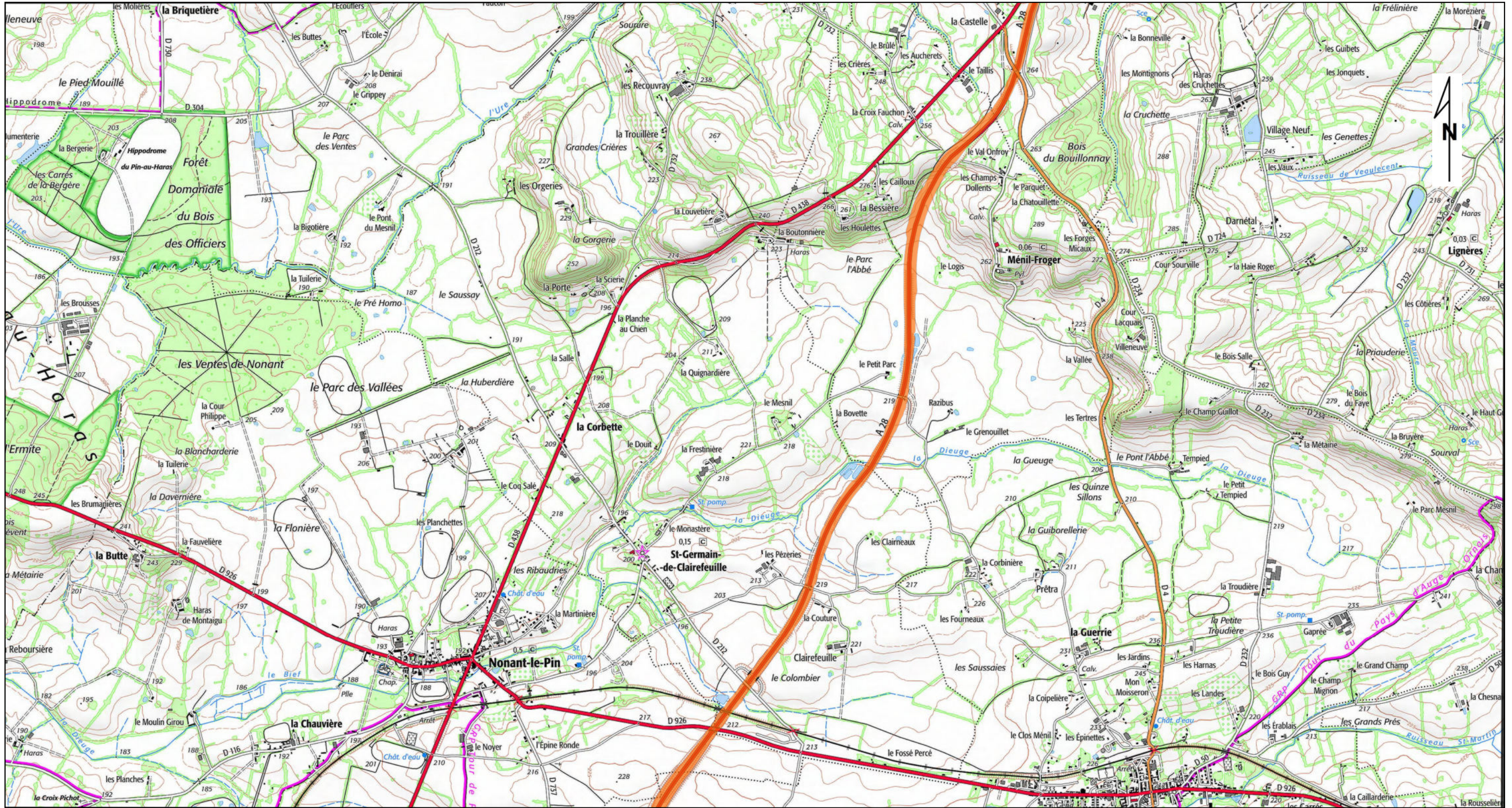


Orange line: Valeurs limites dépassées

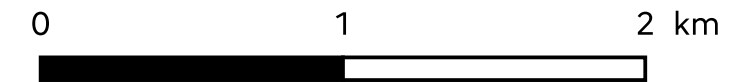


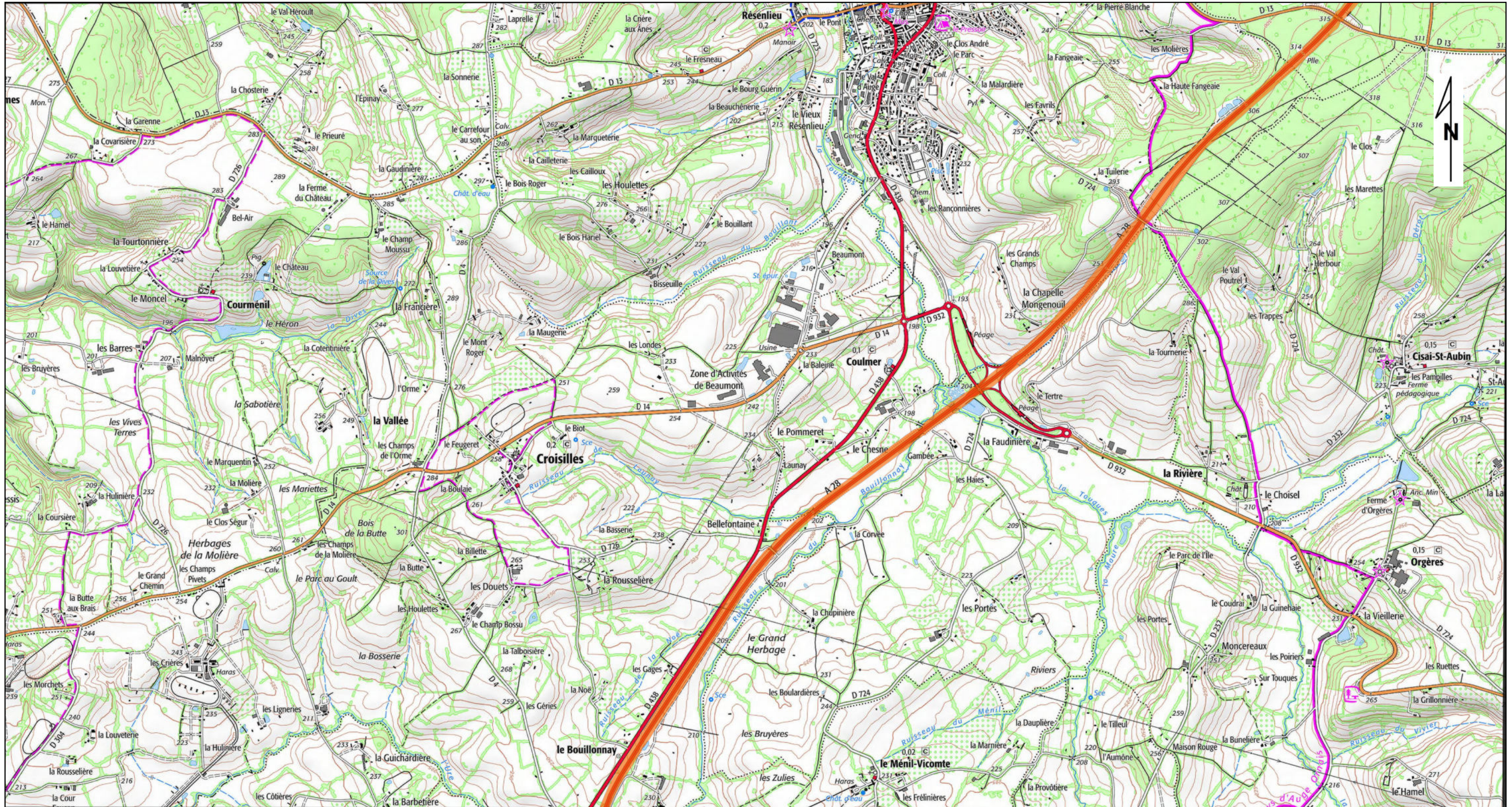
CONNAISSANCE, PROSPECTIVE ET PLANIFICATION (CPP)

K:\1_CARTO\12_NUISANCE\bruit\commande_02_23\atlas_bruit_2023.qgd

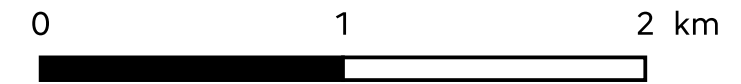


— Valeurs limites dépassées

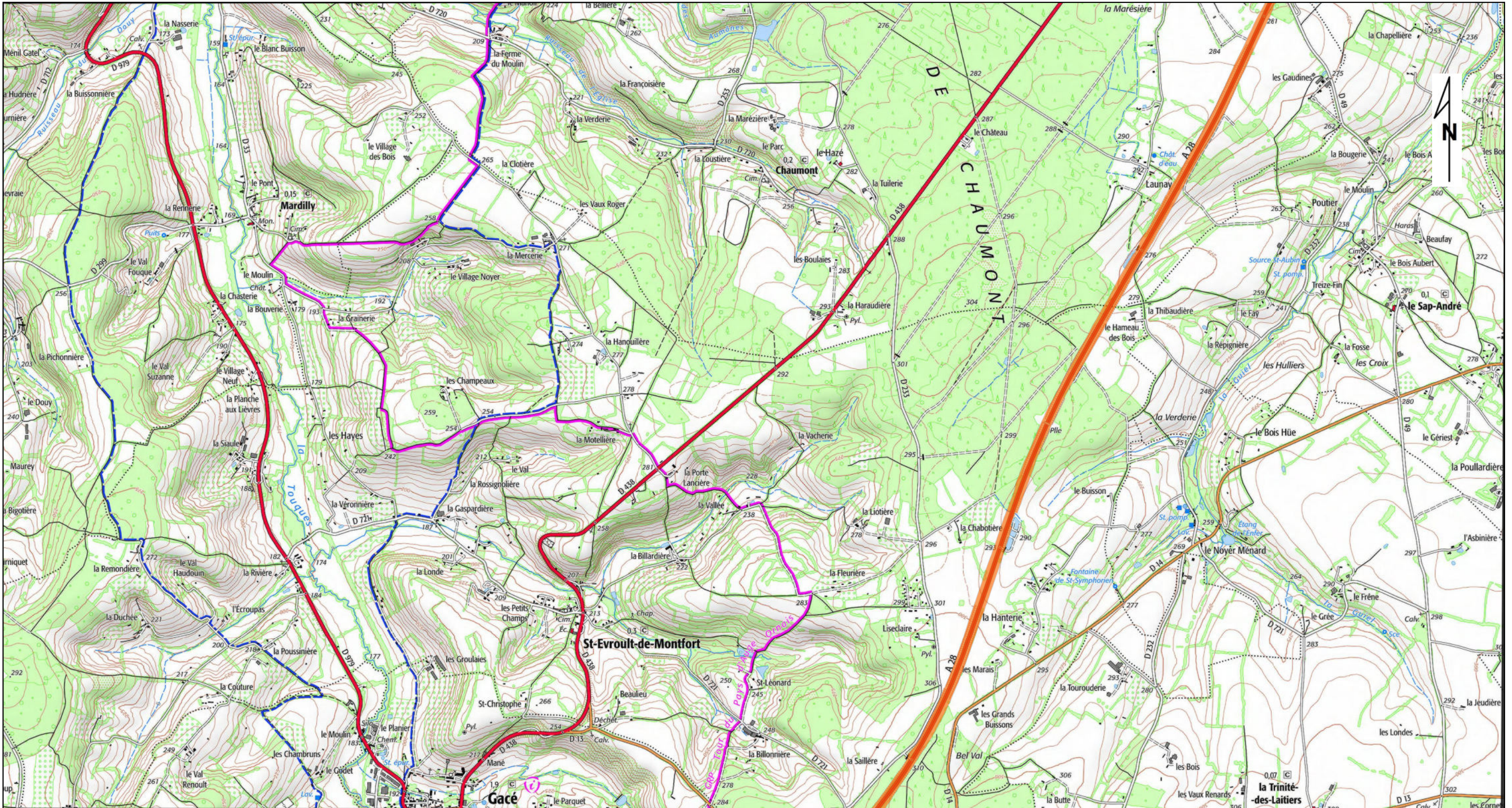




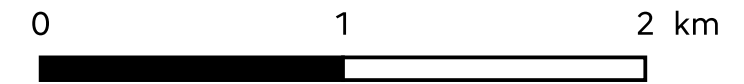
— Valeurs limites dépassées



CONNAISSANCE, PROSPECTIVE ET PLANIFICATION (CPP)

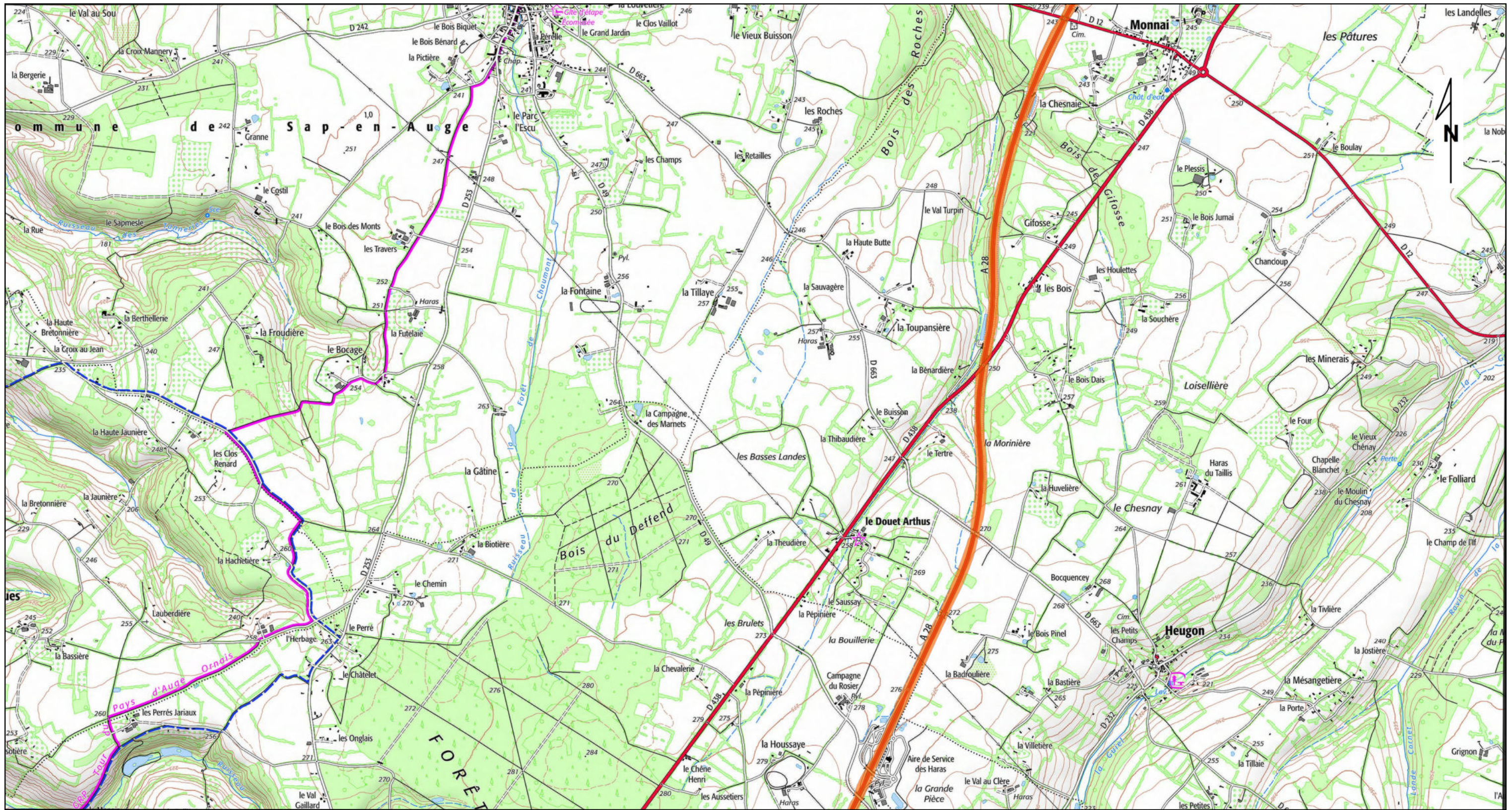


— Valeurs limites dépassées

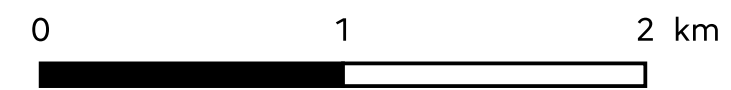


CONNAISSANCE, PROSPECTIVE ET PLANIFICATION (CPP)

K:\1_CARTO\12_NUISANCE\bruit\commande_02_23\las_bruit_2023.qg

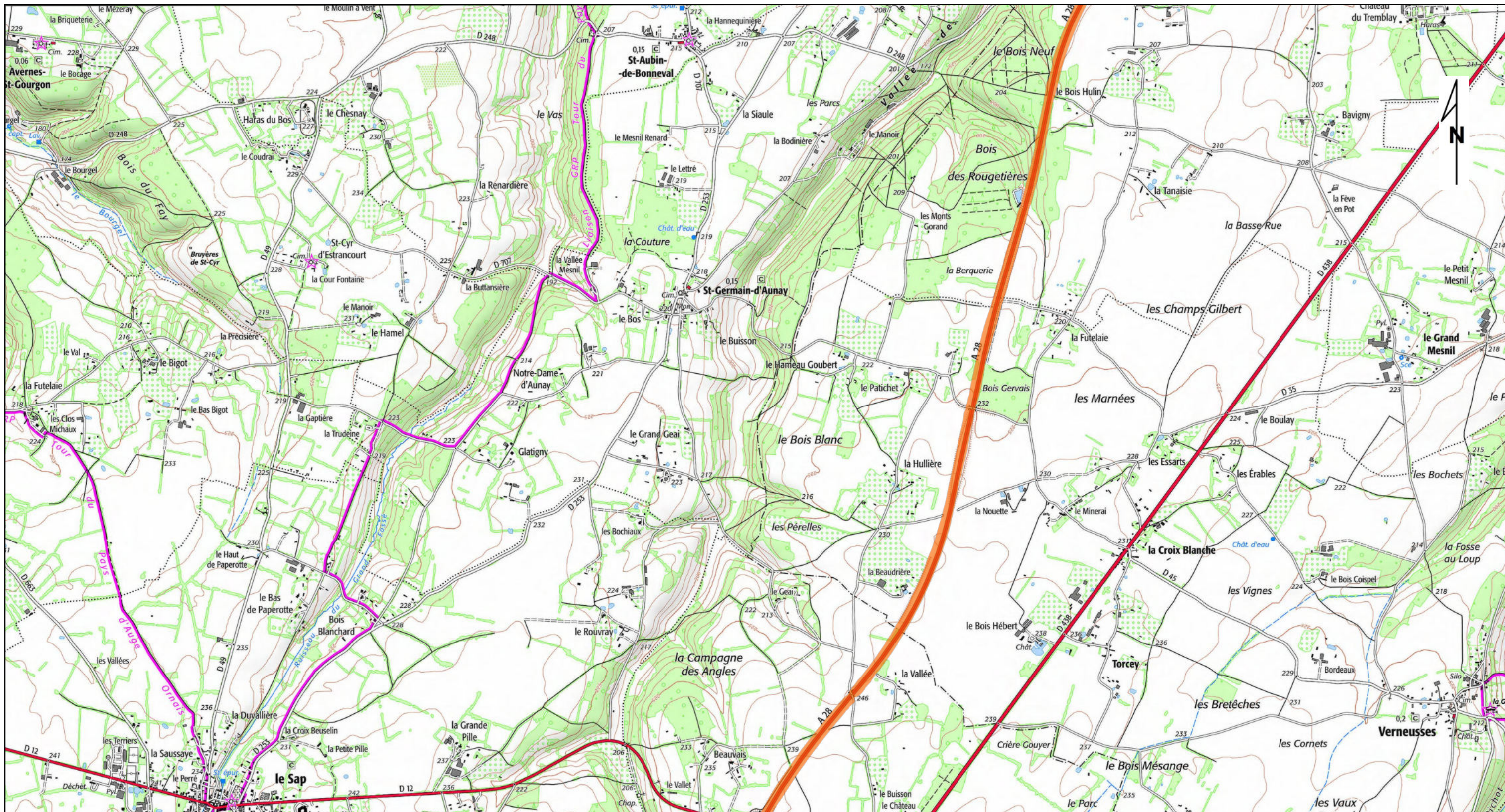


Orange: Valeurs limites dépassées

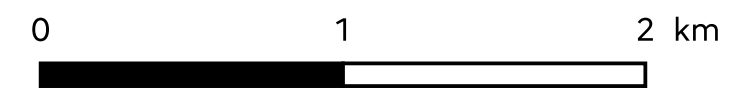


CONNAISSANCE, PROSPECTIVE ET PLANIFICATION (CPP)

K:\1_CARTO\12_NUISANCE\bruit\commande_02_23\atlas_bruit_2023.qg



— Valeurs limites dépassées



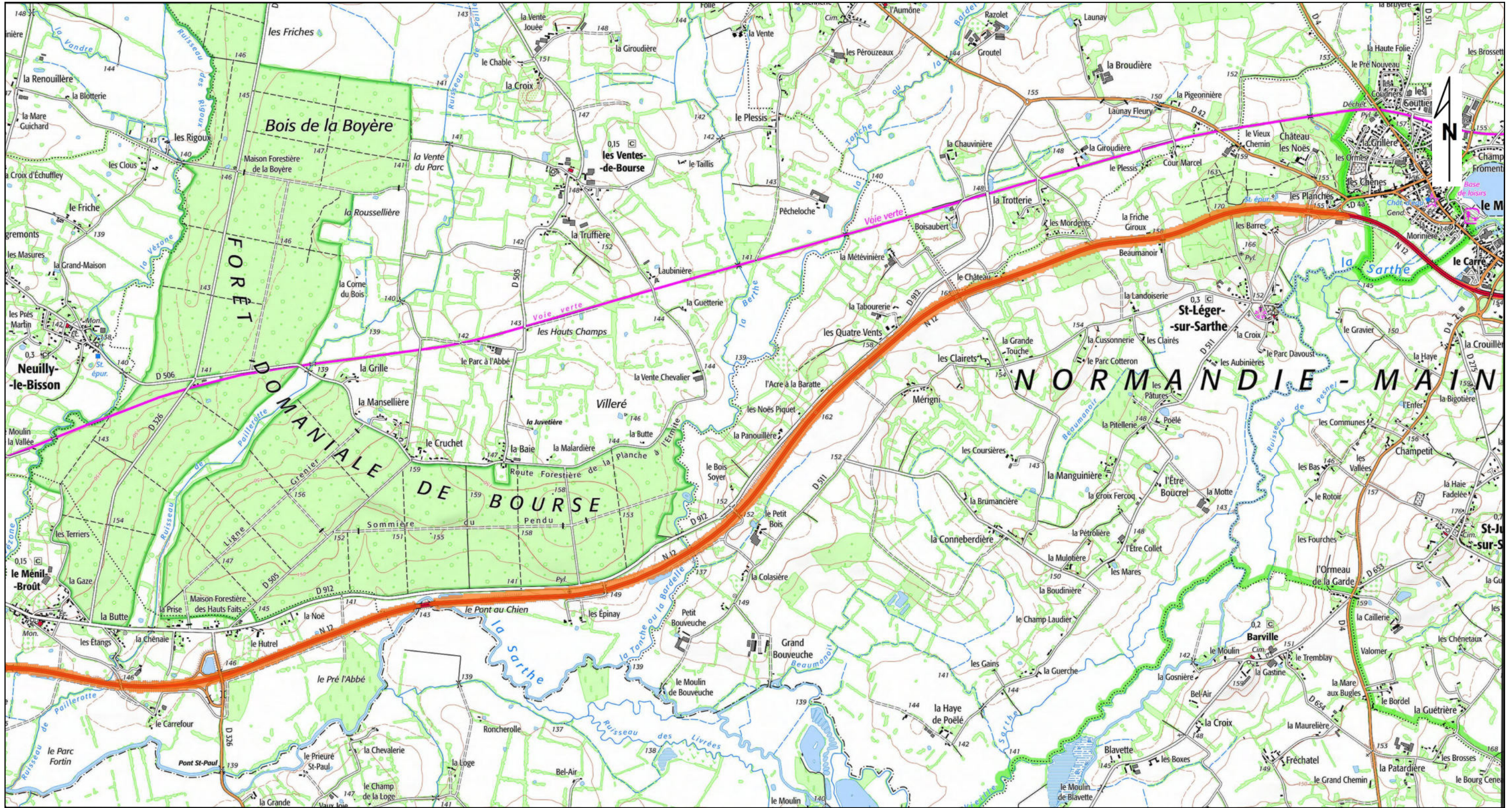
CONNAISSANCE, PROSPECTIVE ET PLANIFICATION (CPP)

BDCARTO® ©IGN - sources : CD61, DIRNO, CEREMA, ALIS et COFIROUTE

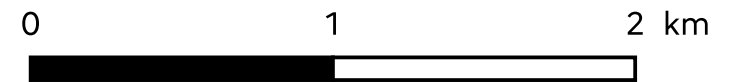
● ● ● ● Direction Départementale des Territoires de l'Orne

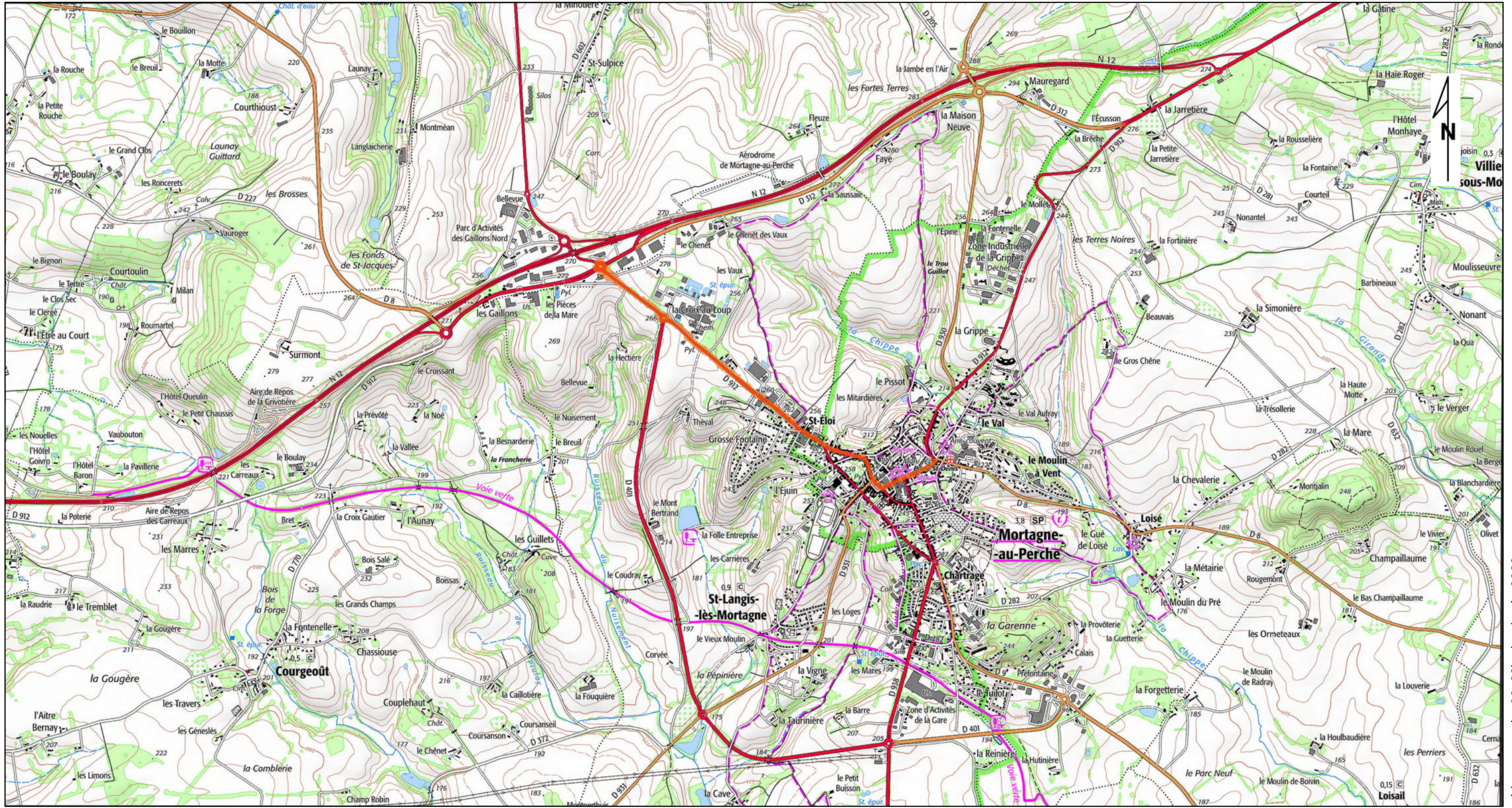
14/02/2023

K:\1_CARTO\12_NUISANCE\bruit\commande_02_23\atlas_bruit_2023.qgz

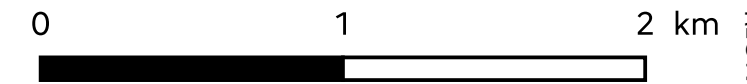


Orange line: Valeurs limites dépassées



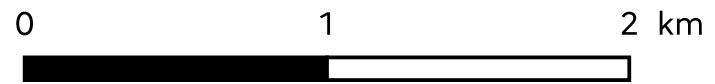
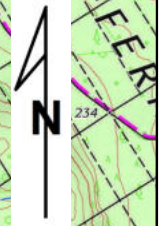
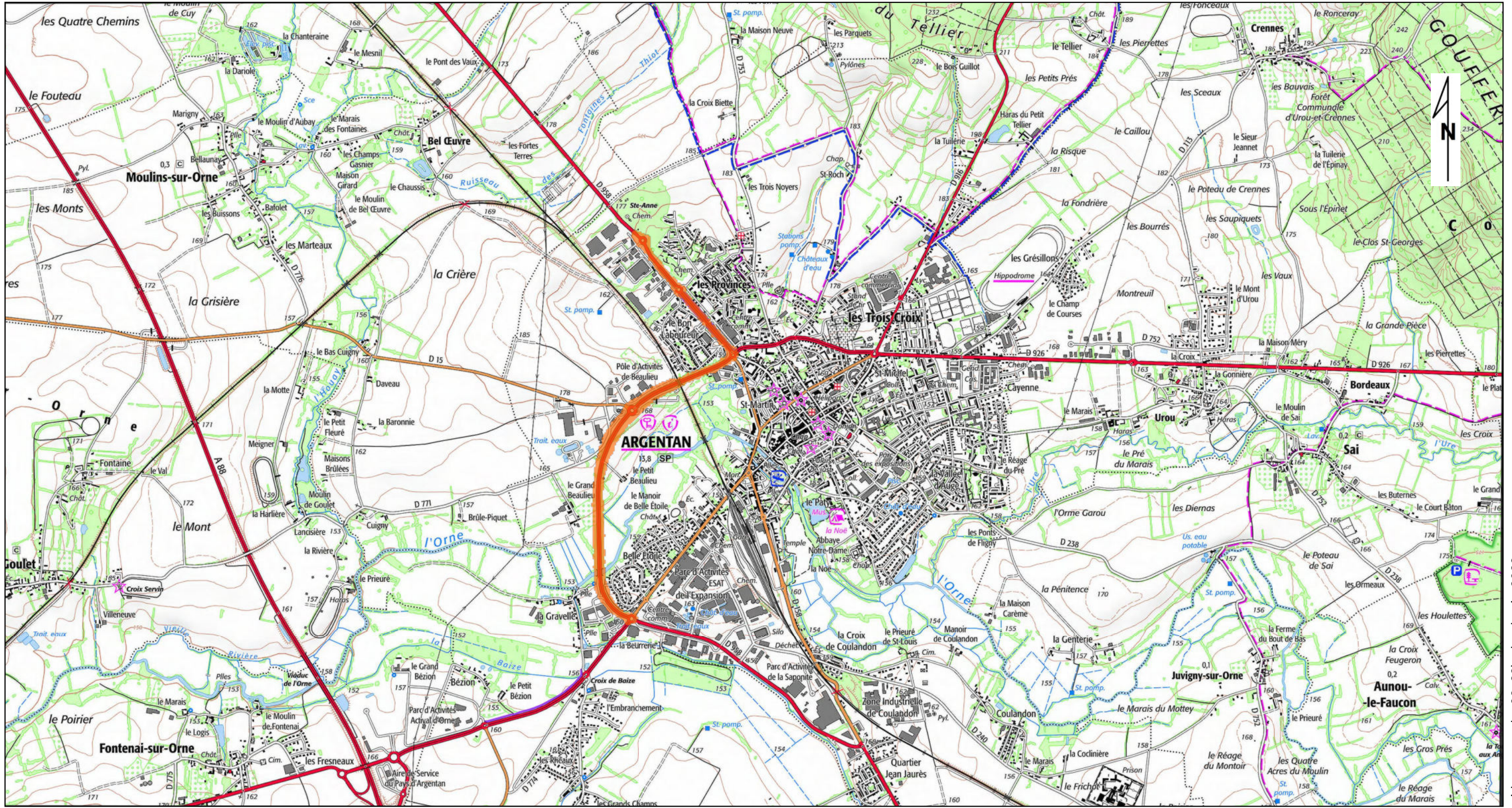


Orange line: Valeurs limites dépassées



CONNAISSANCE, PROSPECTIVE ET PLANIFICATION (CPP)

K:\1_CARTO\12_NUISANCE\bruit\commande_02_23\atlas_bruit_2023.qgd



Orange line: Valeurs limites dépassées

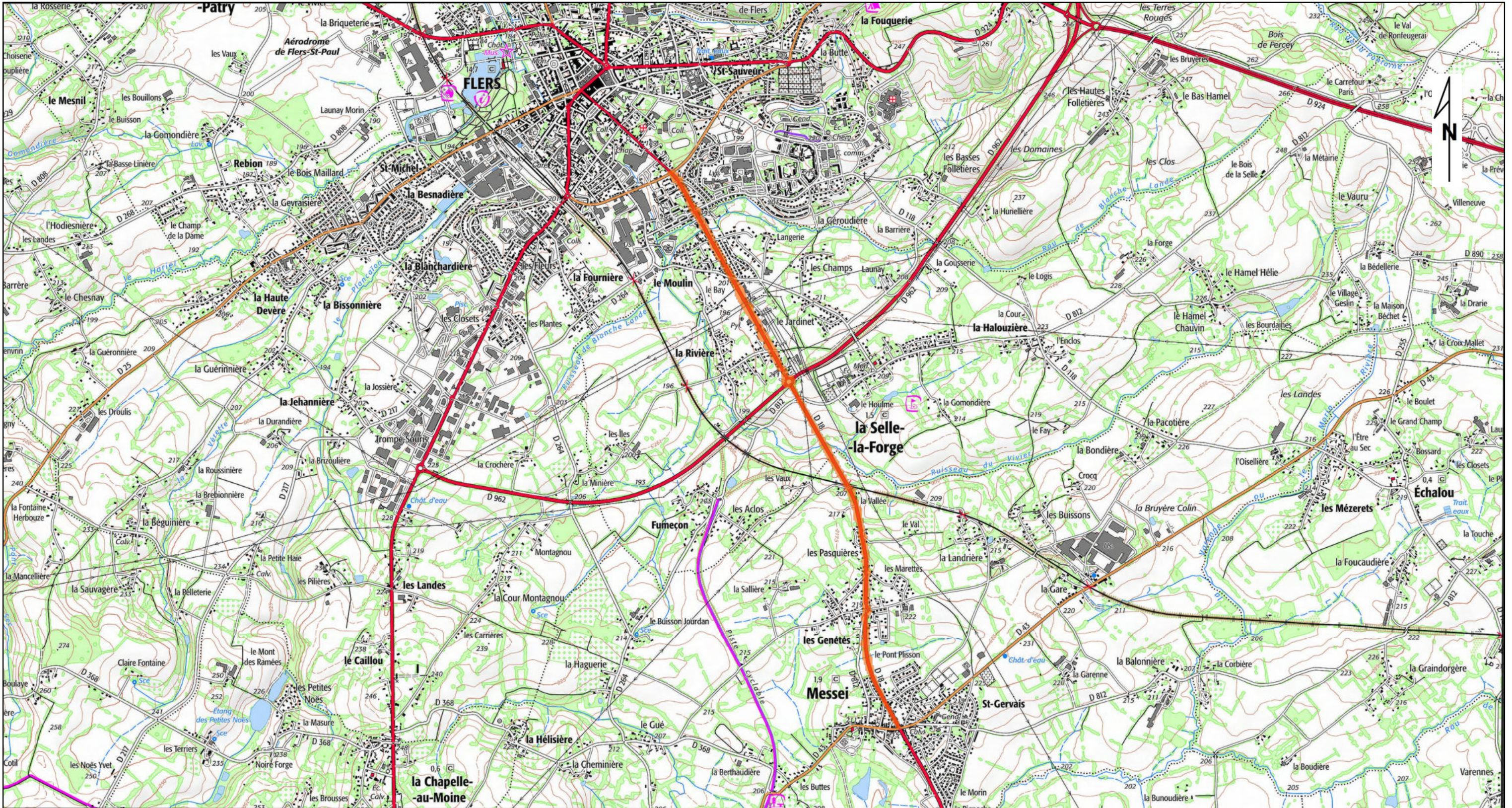
CONNAISSANCE, PROSPECTIVE ET PLANIFICATION (CPP)

BDCARTO® ©IGN - sources : CD61, DIRNO, CEREMA, ALIS et COFIROUTE

Red, Yellow, Blue, Green circles: Direction Départementale des Territoires de l'Orne

14/02/2023

K:\1_CARTO\12_NUISANCE\bruit\commande_02_23\las_bruit_2023.qgd



— Valeurs limites dépassées

